

RECOMMENDED PARKS PROJECTS

Landreth Park Trail Connections

Main Street Underpass

\$250,000

Dover Connector

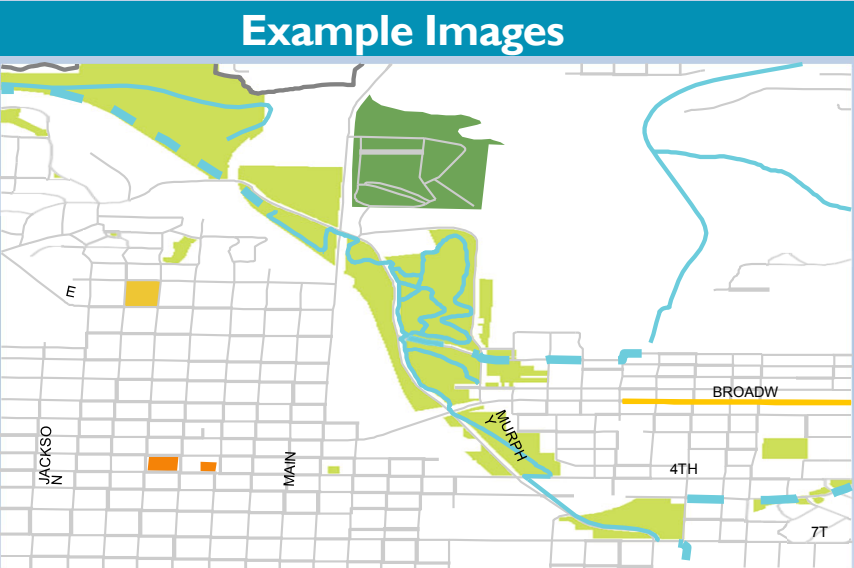
\$750,000

TRAIL IMPROVEMENTS

project type

CONNECTIVITY

goal



Example Images

Description

- Main Street Underpass**
- New 500-foot stretch of trail which would carry pedestrians and cyclists under the Main Street viaduct avoiding the Main Street and Murphy Boulevard intersection.
- Dover Connector**
- Connects Landreth Park to the eastern segment of the new Katy Trail and Dover Outdoor Recreation Area.

RECOMMENDED PARKS PROJECTS

Tin Cup Trail Phase 2

\$750,000
total cost

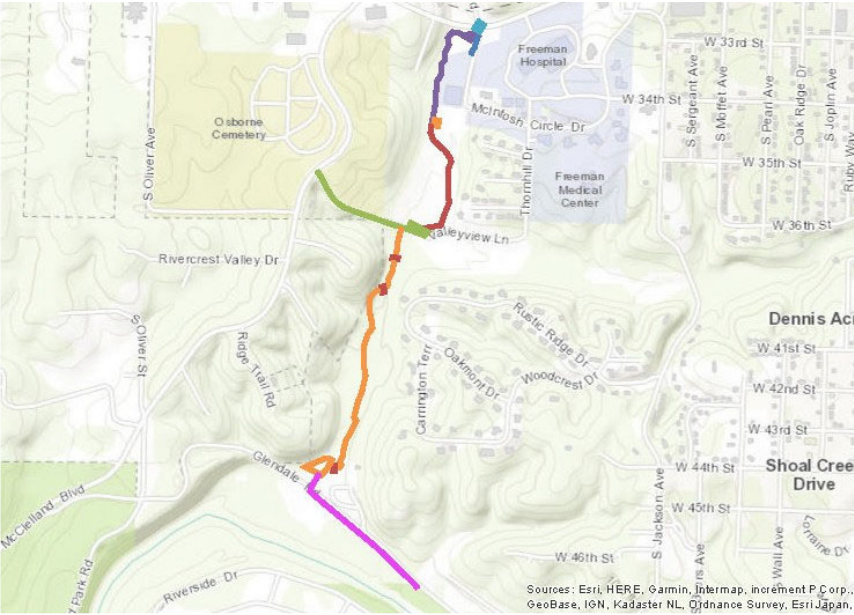
Complete Tin Cup Phase I (currently under construction)

\$250,000
total cost

TRAIL IMPROVEMENTS
project type

CONNECTIVITY
goal

Example Images



Description

This project proposes construction of the southern half of the Tin Cup Trail connecting Osborne and Parkway Cemeteries with McIndoe Park and the Shoal Creek Corridor of parks.

The trail from Low Water Bridge to Grand Falls, including parking at Grand Falls Trailhead, is in the current parks/stormwater sales tax initiative with construction to begin soon.

Sources: Esri, HERE, Garmin, Intermap, increment P Corp., GeoBase, IGN, Kadaster NL, Ordnance Survey, Esri Japan,