

RECOMMENDED PARKS PROJECTS

Campbell Parkway Parking, Sidewalk, and Trail Improvements

\$850,000
total cost

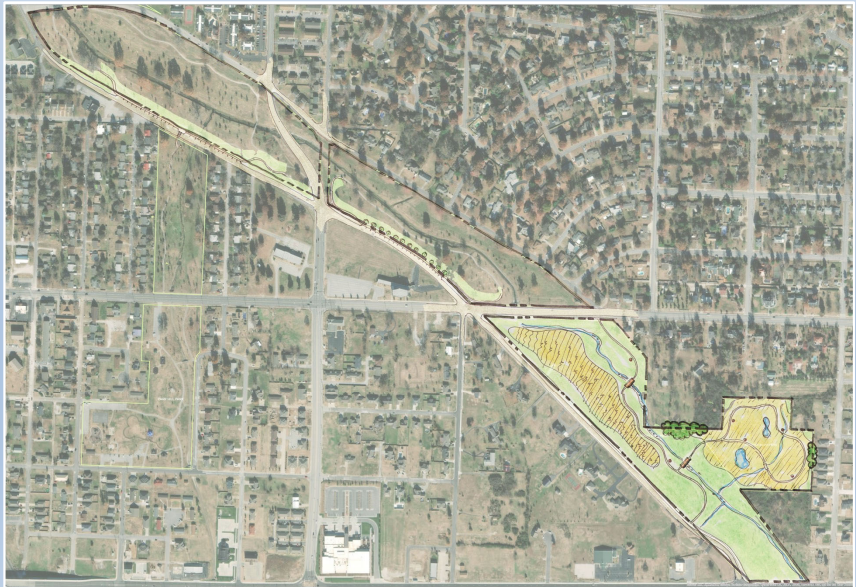
PARK IMPROVEMENTS

project type

DESTINATIONS

goal

Example Images



Description

- This project will:
- Upgrade the existing informal on-street parking by providing curb and gutter.
 - Add asphalt pavement and striping creating approximately 50 parallel spaces on Murphy Boulevard between Campbell Parkway and 15th Street.
 - Add 3/4 of a mile of new trail in the southernmost portion of the park south of 15th Street that would travel through natural areas of the park in the Joplin Creek and restored tallgrass prairie area.