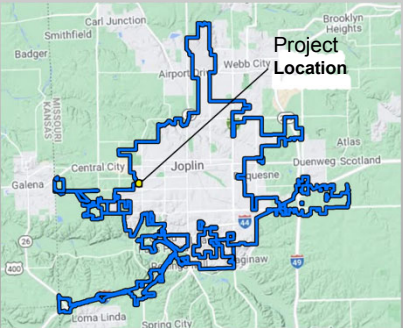


# RECOMMENDED STORMWATER PROJECTS

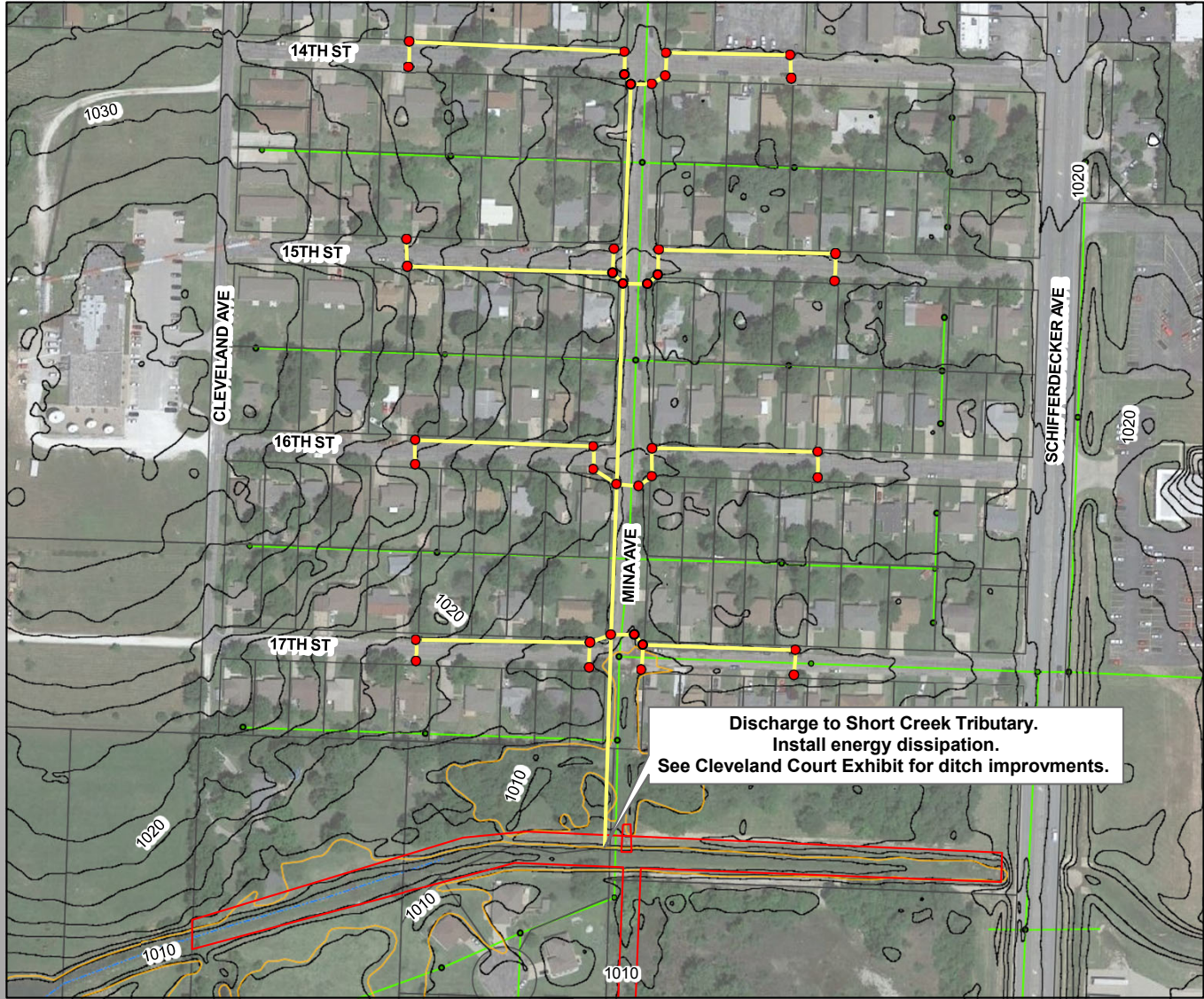
**17th Street & Mina Ave**  
**\$2,334,500**

## Legend

- Proposed Storm Inlets
- Proposed Storm Sewer
- Proposed Channel Improvements
- Floodplain
- 2ft Contours
- Streams
- Parcels
- Sanitary Sewer Manholes
- Sanitary Sewer



0 75 150 300 Feet  
 1 inch = 150 feet



**Discharge to Short Creek Tributary.**  
**Install energy dissipation.**  
**See Cleveland Court Exhibit for ditch improvements.**