

Communicable Disease Newsletter

Joplin/Jasper County

Volume 10, Issue 2

April-June 2017

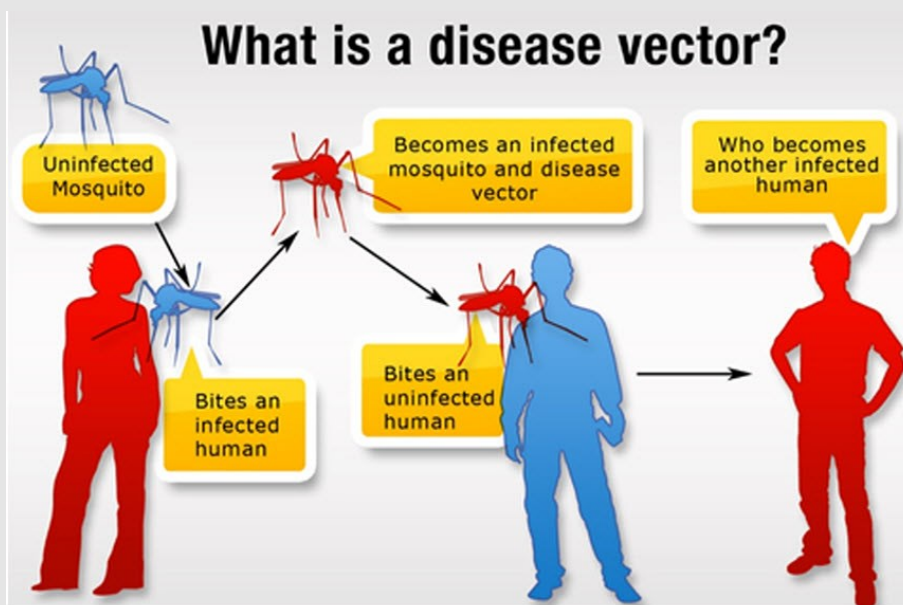
Preventing Mosquito Bites

It's summer and you know what that means—swimming at the pool, nights spent at the ballpark, and cookouts with friends! But the start of summer also brings those pesky mosquitoes, and if you don't properly protect yourself, mosquito bites. Mosquito bites can be more than itchy and annoying; they can make you sick. This summer be sure to take steps to protect you and your family from mosquito bites!

(continued on page 2)

Did You Know?

Some mosquitoes can carry diseases including: Zika virus, West Nile virus, Chikungunya virus, dengue, malaria, and yellow fever. (Diseases depend on geographic location.)



Source: [CSTE](#)

In This Issue

- ⇒ Preventing Mosquito Bites
- ⇒ 2016-2017 Influenza Season
- ⇒ Communicable Disease Report
- ⇒ Sexually Transmitted Disease Report

How to Protect You and Your Family from Mosquito Bites



Use Environmental Protection Agency (EPA)-registered insect repellents with one of these active ingredients: DEET, Picaridin, IR3535, oil of lemon eucalyptus (OLE) or para-menthane-diol (PMD), or 2-undecanone. When used as directed, EPA-registered insect repellents are proven safe and effective, even for pregnant and breastfeeding women.

Tips for Everyone

- ⇒ Always follow the product label instructions.
- ⇒ Reapply insect repellent as directed.

Tips for Babies and Children

- ⇒ Always follow instructions when applying insect repellent to children.
- ⇒ Do not use insect repellent on babies younger than 2 months old.
- ⇒ Do not apply insect repellent onto a child's hands, eyes, mouth, and cut or irritated skin. Adults: Spray insect repellent onto your hands and then apply to a child's face.
- ⇒ Do not use products containing oil of lemon eucalyptus (OLE) or para-menthane-diol (PMD) on children under 3 years old.



Protect Your Baby or Child

- ⇒ Dress your child in clothing that covers arms and legs.
- ⇒ Cover crib, stroller, and baby carrier with mosquito netting.

Wear Long-sleeved Shirts and Long Pants

- ⇒ Treat items, such as boots, pants, socks, and tents, with permethrin or buy permethrin-treated clothing and gear.



Take Steps to Control Mosquitoes Inside and Outside Your Home

- ⇒ Use screens on windows and doors. Repair holes in screens to keep mosquitoes outside.
- ⇒ Use air conditioning when available.
- ⇒ Once a week, empty and scrub, turn over, cover, or throw out items that hold water, such as tires, buckets, planters, toys, pools, birdbaths, flowerpots, or trash containers. Check inside and outside your home. Mosquitoes lay eggs near water.

For more information on protecting yourself from mosquito bites, visit the [CDC](https://www.cdc.gov) website.

Daytime is the most dangerous
Mosquitoes that spread Zika are aggressive daytime biters. They can also bite at night.

Use insect repellent. It works!
Look for the following active ingredients: DEET, picaridin, IR3535, oil of lemon eucalyptus or para-menthane-diol, or 2-undecanone.

Wear protective clothes
Wear long-sleeved shirts and long pants or use insect repellent. For extra protection, treat clothing with permethrin.

Mosquito-proof your home
Use screens on windows and doors. Use air conditioning when available. Keep mosquitoes from laying eggs near standing water.

U.S. Department of Health and Human Services
Centers for Disease Control and Prevention

For more information: www.cdc.gov/zika

15M002048
10/2016/1.10/16/15M002048

Table 1, Joplin City		
Type of Influenza	Season TD	% of Total
Influenza A	398	69.2
Influenza B	177	30.8
Unknown/Untyped	0	0
Total	575	100

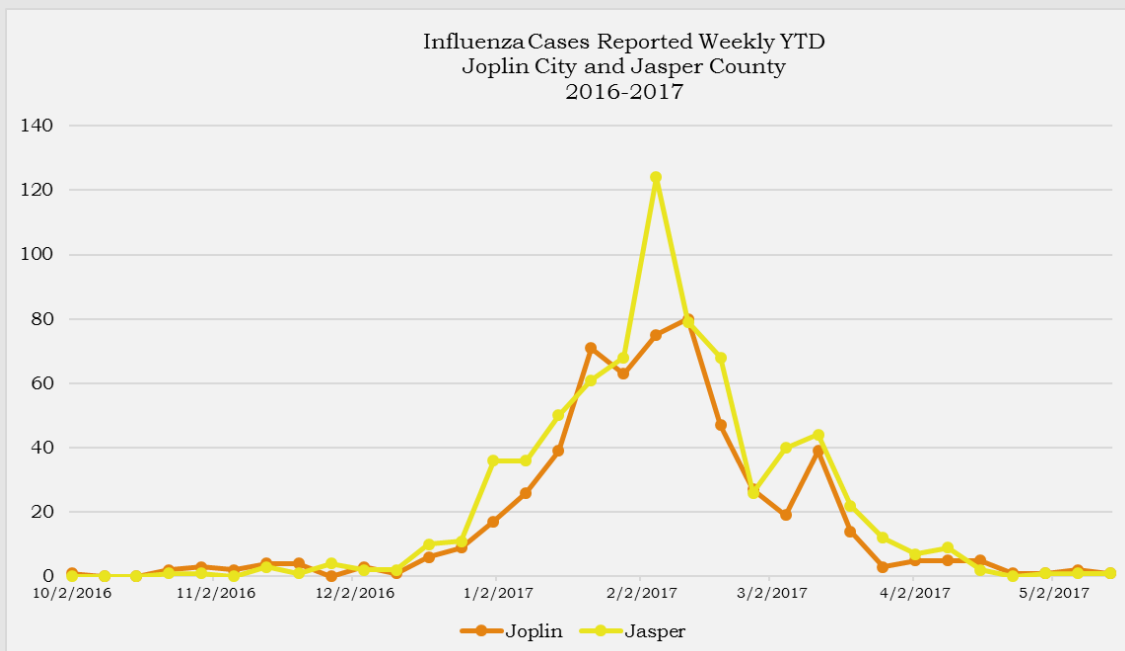
Table 2, Jasper County		
Type of Influenza	Season TD	% of Total
Influenza A	476	65.9
Influenza B	246	34.1
Unknown/Untyped	0	0
Total	722	100

Table 3, Joplin City		
Age Group	Season TD	% of Total
0-1	45	7.8
2-4	57	9.9
5-14	140	24.3
15-24	63	11
25-49	94	16.3
50-64	86	15
65+	90	16
Total	575	100

Table 4, Jasper County		
Age Group	Season TD	% of Total
0-1	38	5.3
2-4	59	8.2
5-14	239	33.1
15-24	95	13.2
25-49	126	17.5
50-64	74	10.2
65+	91	12.6
Total	722	100

A *season-to-date total* of 1,297 laboratory-positive influenza cases were reported in Joplin City and Jasper County for the 2016-2017 flu season. The influenza type reported by percentage included: 69.2% Influenza A and 30.8% Influenza B in Joplin City, and 65.9% Influenza A and 34.1% Influenza B in Jasper County. The age group of 5-14 made up the highest percentage of cases for Joplin (24.3%) and Jasper County (33.1%). These numbers are consistent with Missouri totals (71,469 cases): 64% Influenza A, 34% Influenza B, and 2% untyped.

Analysis of cases reported was based on age, type of influenza, and jurisdiction.



*Source: Joplin City/Jasper County HD Flu Surveillance, 2016-2017. Data is from week beginning October 2, 2016 to week beginning May 14, 2017.

**Table 5, Communicable Diseases Reported
Joplin City/Jasper County
2016 and 2017 (January 1-June 30)**

	Joplin City		Jasper County	
	2016	2017	2016	2017
Anaplasma Phagocytophilum	2	0	0	1
Campylobacteriosis	12	8	15	13
Coccidioidomycosis	1	0	1	1
Cryptosporidiosis	1	3	5	1
E. Coli Shiga Toxin Positive	0	0	0	2
E. Coli O157 H7	2	0	0	2
Ehrlichia Chaffeensis	5	2	0	6
Haemophilus Influenzae, Invasive	0	0	0	3
Hemolytic Uremic Syndrome	0	0	1	1
Hepatitis A Acute	0	1	0	1
Hepatitis B	6	7	2	3
Hepatitis B (Pregnancy) Prenatal	1	0	0	1
Hepatitis B Acute	2	3	2	1
Hepatitis B Chronic Infection	6	6	1	2
Hepatitis C	0	6	1	2
Hepatitis C Chronic Infection	47	42	14	22
Legionellosis	3	1	5	2
Lyme	2	0	0	2
MOTT	8	8	4	3
Mumps	0	6	0	8
Pertussis	0	1	2	1
Rocky Mountain Spotted Fever	2	3	3	4
Salmonellosis	4	4	9	2
Shigellosis	0	3	1	0
Strep Disease, Group A Invasive	1	2	1	2
Strep Pneumoniae Invasive	0	5	1	3
TB Disease	3	1	0	1
TB Infection	10	15	24	10
Varicella	5	3	4	4
Total Cases Per Year	123	130	96	104

Key

2017 more than 2016	
2017 less than 2016	

Source: DHSS

**Table 6,
Sexually Transmitted Diseases
Jasper County January-May 2017**

	2017
Chlamydia	318
Gonorrhea	77
Syphilis	3
Total	398

Jasper County has had a total of 398 sexually transmitted disease (STD) cases from January to May 2017. The majority of STD cases seen were positive for chlamydia, followed by gonorrhea and syphilis respectively. Data for STD count is tracked by the Missouri Department of Health and Senior Services and is subject to change as reports are collected.

Source: DHSS

Contact Us

Joplin City Health Department
321 E 4th Street
Joplin, MO 64801
Phone: 417-623-6122
Fax: 417-624-6453
www.joplinhealthdepartment.org
Like us on Facebook:
<https://www.facebook.com/joplinhealthdepartment/>

Jasper County Health Department
105 Lincoln Street
Carthage, MO 64836
Phone: 417-358-3111
Toll-Free: 1-877-879-9131
<http://health.jaspercounty.org>
Like us on Facebook:
<https://www.facebook.com/JasperCountyHealthDept/>

If you have any comments, contact:
Jillian Pollard
Regional Epidemiologist
Joplin City Health Department
Jasper County Health Department
jpollard@joplinmo.org
Office: 417-623-6122