

2013



Public Health
Prevent. Promote. Protect.

Annual Report

Joplin City Health Department

321 E. 4th St., Joplin, MO. 64801, - Tel. 417-623-6122 Fax. 417-624-6453 ; WIC Division—Tel. 417-623-1928 Fax. 417-625-4753
www.joplinhealthdepartment.org



About Us

Joplin is located in southern Jasper County and northern Newton County. Joplin Health Department (JHD) primarily offers services to Joplin residents although certain services such as vital records and WIC are also provided to non-Joplin residents.

Revenue

In 2013, JHD received revenue of \$4,992,836 from local (\$ 1,491,150) and non-local (\$3,501,686) sources. EPA grant accounted for 52% of total revenue (about \$2,596,014), followed by local taxes with 27% (\$1,339,619).

Expenses

JHD expenditure was \$4,978,585 with 60% going toward contracted services (\$2,994,189), followed by salary/fringe (34%) at 1,717,194. About 54% (2,688,115) was used toward EPA grant. (See revenue/expenditure charts on p.2)

(Continued on page 2)

Inside

Services	Page
Revenue/Expenditure Charts	2
Environmental/Epidemiology	3
Women, Infants and Children (WIC)	3
Medical	3
Emergency Response	4
Animal Control	4
Vital Records	4

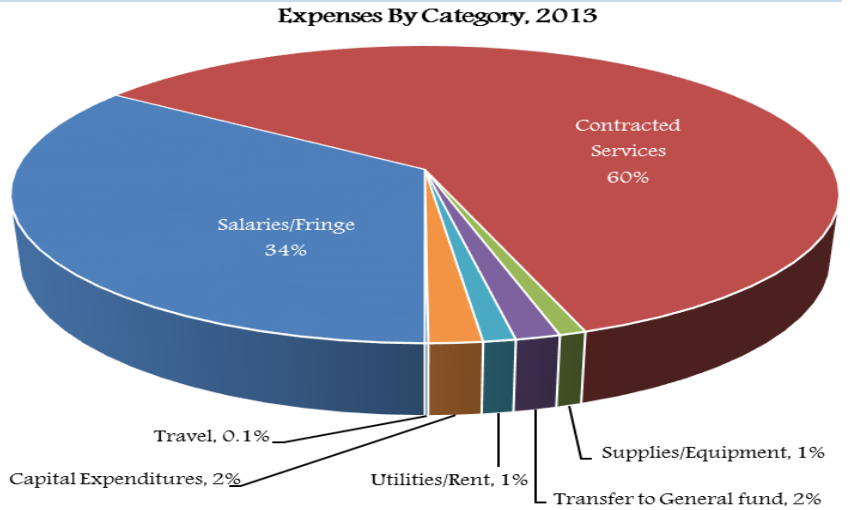
Days and Hours of operation
Monday –Friday
8.00am–5.00pm

Our Mission

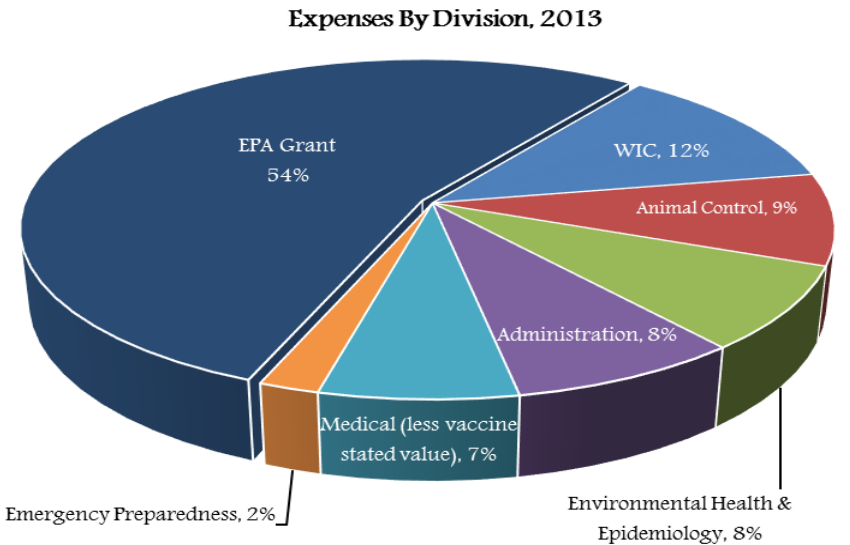
In order to protect the health of the community, the health department provides prevention, maintenance and educational services to the citizens and visitors of the area, other social, medical and educational providers, the business community, and the local, state and federal government agencies. Highly professional, responsive services are provided to all customers in a courteous manner with respect to individual dignity.

Revenues and Expenses, 2013

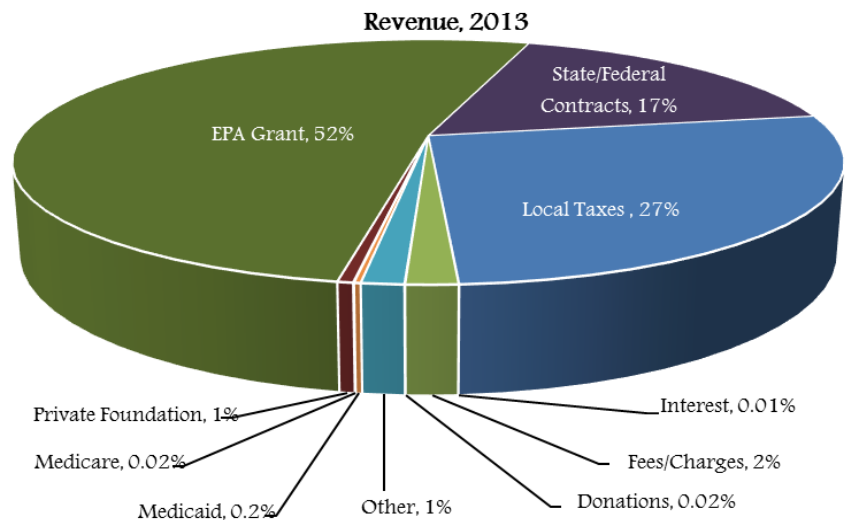
Expenses by Category	Amount(\$)
Salaries/Fringe	1,717,194.33
Contracted Services	2,994,189.30
Supplies/Equipment	44,511.79
Transfer to General fund	74,367.96
Utilities/Rent	53,798.81
Capital Expenditures	89,108.36
Travel	5,414.55
Total	4,978,585.10



Expenses By Division	Amount(\$)
WIC	604,296.29
Animal Control	436,233.09
Environmental Health & Epidemiology	401,403.14
Administration	402,253.50
Medical (Less vaccine stated value)	342,028.40
Emergency Preparedness	104,255.39
EPA Grant	2,688,115.29
Total	4,978,585.10



Revenue 2013		Amount (\$)
Local Revenue 30%	Local Taxes	1,339,619.98
	Interest	427.07
	Fees/Charges for Services	82,631.50
	Donations	820.00
	Other	67,652.28
Other Revenue 70%	Medicaid	10,513.62
	Medicare	1,182.60
	Private Foundation	24,944.42
	EPA Grant	2,596,014.07
	State/Federal Contracts	869,031.37
Total	4,992,836.91	



Environmental and Epidemiology Services

Environmental and Epidemiology division has 4 Environmental Health Specialists, one Public Health Nurse and one Epidemiology Specialist.

Services provided include.

- ◆ Inspections on food establishments, lodgings, tattoo parlors, daycare facilities and swimming pools. Food safety trainings are also offered.
- ◆ Mosquito control activities (occasional fogging & treatment of standing water).
- ◆ Well-water testing
- ◆ Communicable diseases surveillance and investigations on reportable diseases.
- ◆ TB program which include: TB testing, case management, investigations, etc.
- ◆ Complaint investigations for regulated facilities.
- ◆ Architectural plan reviews for remodels or new facilities, in coordination with Joplin Building and Fire Departments.

Permitted Facilities 2013

- ◆ Food establishments – 420
- ◆ Lodgings – 23
- ◆ Tattoo parlors – 12
- ◆ Daycare facilities – 31
- ◆ Swimming pool – 46

Services	2012	2013
Food Establishment Inspections	686	767
Lodging Inspection/ Re-inspections	66	73
Pools Inspection	297	290
New Facility Plans Reviewed	31	35
Food Service Staff Trained	119	239
Disease Investigations	219	179
TB Skin Tests	179	293

Women, Infant and Children (WIC)

WIC is the special supplemental nutrition program for women, infants and children. The program is grant funded by USDA via the Missouri Department of Health and Senior Services. The program is designed to promote and improve clients' health outcomes through nutritional education and counseling. Applicants must meet income guidelines of 185% or less of

federal poverty level, provide proof of residence and proof of identity. The program has **5** Nutritionists, **4** Certifiers, **3** Clerks, **6** Peer Counselors, **4** Spanish interpreters and **one** Nutrition Education Assistant from the University of Missouri Extension Family Nutrition Education Program. The WIC program provides breastfeeding support, nutrition education, referral to appropriate health agencies, nutritious food packages for eligible applicants.

Services	2012	2013
Total Clients	42,102	43,503
Women	11,155	11,490
Infants	11,729	12,233
Children	19,218	20,001
Breastfeeding Mothers Peer Counseled	3,886	3,917
Breast Pumps Issued	229	209

Medical Services

Medical Division has 3 nurses (2 RNs, one LPN) and 2 clerks. Medical services include vaccinations (flu, yellow fever), childhood immunizations, maternal and child health programs (including pregnancy tests and referral, HIV tests, STD clinic, enrollment in temporary Medicaid card and MO HealthNet.

Other programs include childhood lead poisoning testing and prevention, through the Jasper County Health Department, low income pharmacy support by providing pharmaceuticals to Joplin residents who are clients of the Joplin Community Clinic.

JHD also houses AIDS Project of the Ozarks (APO) case managers who provide on-going case management of HIV positive residents.

Services	2012	2013
Child Immunizations– Shots	2,119	1,933
Adult Immunizations—Shots	35	48
Yellow Fever Vaccinations	66	63
Influenza Vaccinations	406	296
HIV Tests	146	141
Pregnancy Tests	168	154
Temp Medicaid Cards Enrolled	128	140
Temp Medicaid Cards Renewal	32	43
Number of Prescriptions	7,035	6,915
STD Clients	161	111

Emergency Preparedness and Response Planning

Joplin City Health Department is an active partner with other emergency response agencies in the community such as the Local Emergency Planning Committee (LEPC) and the Jasper/Joplin Emergency Healthcare Coalition (J/J-EHC).

Emergency Preparedness Planning services are grant funded by the Department of Health and Senior Services. Emergency Preparedness planning meetings are regularly held to discuss emergency preparedness issues, review plans, plan drills/exercises, provide surveillance and response capabilities for public health threats and updates regarding current activities.

Animal Control Services

The JHD Animal Control Division has 3 Animal Control Officers (ACO) and provides comprehensive animal control services to Joplin residents.

Services provided include.

- ◆ Animal bite investigation and quarantine,
- ◆ Impoundment of stray and loose animals,
- ◆ Wild animal live trap loan services,

- ◆ Nuisance animal complaint investigation,
- ◆ Enforcement of the city animal control code,
- ◆ Educational programs regarding animal issues to the general public, schools, among others,
- ◆ Animal abuse and neglect investigation.

Services	2012	2013
Citations	129	118
Written Warnings	192	159
Animals Quarantined	125	89
Animals Picked Up by ACO	2,414	2,330
Deceased Animals Pickup	413	381
Calls for Service	5,715	5,037
Action Performed	6,599	4,199

Vital Records: Birth and Death Certificates

The JHD provides Missouri birth and death certificate printing for applicants born in Missouri. Each birth certificate costs \$15. A death certificate is \$13 per first copy and \$10 for an additional copy requested at the same time.

Birth certificates are available from 1920 and death certificates from 1980.

Services	2012	2013
Number of Clients Seen	2,939	3,639
Birth Certificates Issued	3,126	3,838
Death Certificates Issued	405	491

For more information, contact us at 417-623-6122 or visit our website <http://www.joplinhealthdepartment.org> .
We are located at 321 E. 4th St., Joplin, MO. 64801. Joplin City Health Department is an equal opportunity employer.