



Tin Cup Trail

For the City of Joplin





The Parks and Stormwater Sales Tax was approved by voters in 2011. One of the items listed on the projects to be funded by the tax was the Tin Cup Trail.

2012 – 2022 Stormwater Sales Tax Program



Current Plans



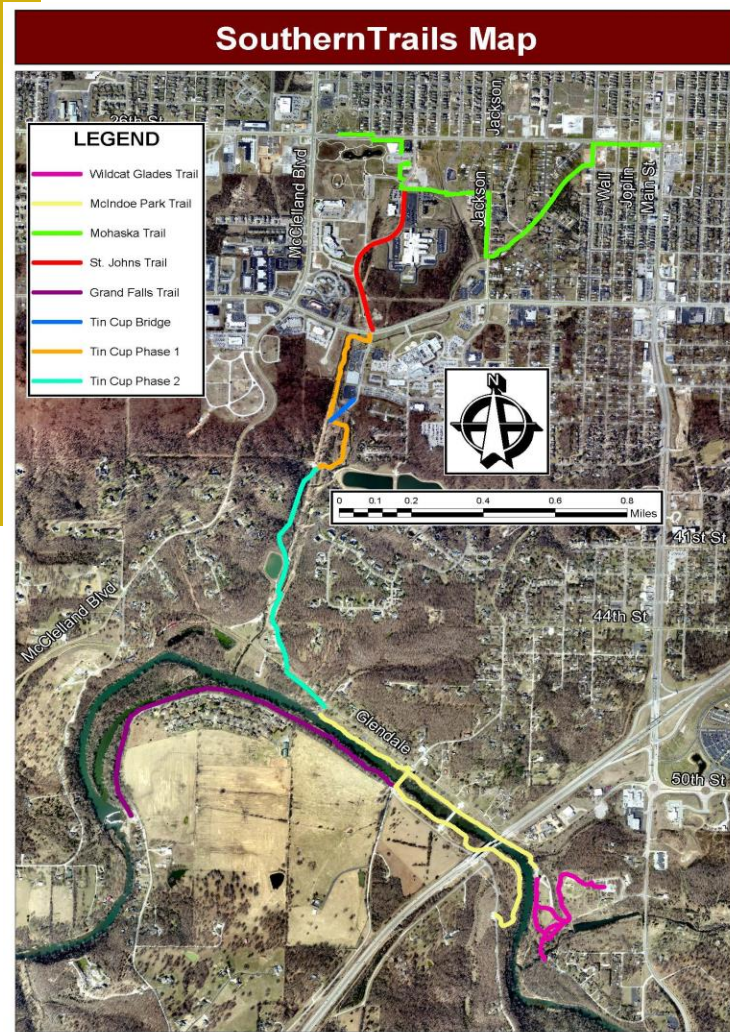
The Current Plan taken to a public meeting on 6-27-23
As shown to the right. Please note proposed bridge is
shown in red.



Trails Map



The map on the right illustrates the significance of the Tin Cup Trail concerning connectivity.



UNFUNDED NEEDS



→ The unfunded requirements would need to tackle both the tunnel and the necessary structure to extend over the twin culverts, enabling the continuation of the trail to the south along McIntosh Circle.

Tin Cup Trail Goal: Construct a multi-use trail beginning at the intersection of 32nd Street and St. John's Boulevard and ending at Grand Falls. This trail would connect two existing trail systems and connect to a popular recreation area at Grand Falls. The trail would also include a tunnel under 32nd Street to allow an unimpeded and safe crossing for pedestrians and cyclists. • Cost: \$4.8 Million • Background: The Mohaska Trail connects two city parks, a medical and dental school, an elementary school, the Joplin Senior Center, and single- and multi-family residential housing within the Mohaska neighborhood. The Tin Cup trail would extend this connection to Freeman Hospital and the Shoal Creek trail system, ending at the Grand Falls. The Tin Cup trail would link residential, recreational, medical, and educational centers across the south side of the City. • Schedule of Construction: Design and ROW acquisition finished 2022 with Project out to construction 2023.

OPTIONS



- Continue as planned.
- Wait and design tunnel with alternate funds
 - This choice involves time for design, right of way acquisition, and utility relocation. This could add 3 years to the schedule.
- Add box to Capital Improvements.

