

# Communicable Disease Newsletter

## Joplin/Jasper County

Volume 10, Issue 4

October-December 2017

## Pertussis

Pertussis, also known as whooping cough, is a highly contagious respiratory disease. It is caused by the bacterium *Bordetella pertussis*.

Pertussis is known for uncontrollable, violent coughing which often makes it hard to breathe. After cough fits, someone with pertussis often needs to take deep breaths, which result in a “whooping” sound. Pertussis can affect people of all ages, but can be very serious, even deadly, for babies less than a year old.

---

### *Did You Know?*

*The best way to protect against pertussis is by getting vaccinated.*

---



Source: [CDC](http://www.cdc.gov)

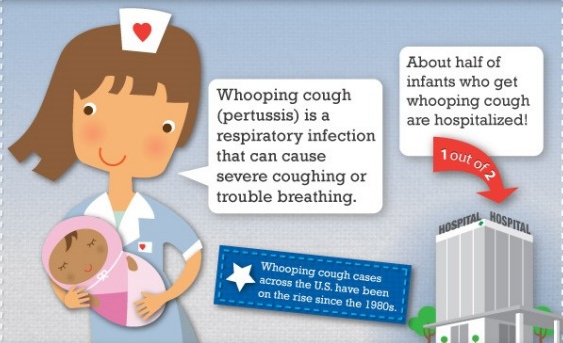
### In This Issue

- ◆ Pertussis
- ◆ Communicable Disease Report
- ◆ Sexually Transmitted Disease Report
- ◆ Influenza Report

# Protect Babies from Whooping Cough

If you're pregnant get a Tdap shot!

Whooping cough is deadly for babies



Pregnant women need to get a Tdap shot



Create a circle of protection around your baby

4 out of 5 babies who get whooping cough catch it from someone at home\*

Everyone needs whooping cough vaccine:



To learn more about pertussis, visit the pertussis page on the CDC website [here](http://www.cdc.gov/whoopingcough).

Pertussis is a very contagious disease only found in humans. Pertussis spreads from person to person. People with pertussis usually spread the disease to another person by coughing or sneezing or when spending a lot of time near one another where you share breathing space. Many babies who get pertussis are infected by older siblings, parents, or caregivers who might not even know they have the disease.

Infected people are most contagious up to about 2 weeks after the cough begins. Antibiotics may shorten the amount of time someone is contagious.

Make sure your baby gets all **5** doses of whooping cough vaccine on time

Your baby needs whooping cough vaccine at:



You can get whooping cough vaccines at a doctor's office, local health department, or pharmacy

Like it? Tell a friend! It's important! Pin it! Tweet it! Share it on Facebook!

[www.cdc.gov/whoopingcough](http://www.cdc.gov/whoopingcough)

U.S. Department of Health and Human Services  
Centers for Disease Control and Prevention

NCIRDg301-v8 | 2.14.13

Early symptoms can last for 1 to 2 weeks and usually include:

- Runny nose
- Low-grade fever (generally minimal throughout the course of the disease)
- Mild, occasional cough
- Apnea – a pause in breathing (in babies)

After 1 to 2 weeks and as the disease progresses, the traditional symptoms of pertussis may appear and include:

- Paroxysms (fits) of many, rapid coughs followed by a high-pitched “whoop” sound
- Vomiting during or after coughing fits
- Exhaustion after coughing fits

**Table 1, Communicable Diseases Reported  
Joplin City/Jasper County  
2016 and 2017 (January 1-December 31)**

	Joplin City		Jasper County	
	2016	2017	2016	2017
Anaplasma Phagocytophilum	4	1	7	3
Campylobacteriosis	21	14	41	33
Coccidioidomycosis	1	0	1	1
Cryptosporidiosis	5	7	6	5
E. Coli Shiga Toxin Positive	1	2	3	4
E. Coli O157 H7	2	0	0	4
Ehrlichia Chaffeensis	8	5	6	10
Haemophilus Influenzae, Invasive	1	1	1	4
Hemolytic Uremic Syndrome	0	0	2	1
Hepatitis A Acute	1	1	1	1
Hepatitis B	11	11	6	5
Hepatitis B (Pregnancy) Prenatal	3	1	2	1
Hepatitis B Acute	3	7	4	2
Hepatitis B Chronic Infection	7	9	5	5
Hepatitis C	1	4	8	2
Hepatitis C Chronic Infection	98	112	25	56
Legionellosis	3	1	8	5
Lyme	6	1	0	2
Meningococcal Disease	1	1	0	0
MOTT	17	17	8	6
Mumps	0	6	0	9
Pertussis	0	1	4	3
Rocky Mountain Spotted Fever	8	6	10	16
Salmonellosis	7	9	20	19
Shigellosis	0	4	1	0
Strep Disease, Group A Invasive	3	0	1	2
Strep Pneumoniae Invasive	1	5	2	5
TB Disease	6	2	1	2
TB Infection	36	34	34	22
Varicella	10	6	6	14
<b>Total Cases Per Year</b>	<b>265</b>	<b>268</b>	<b>213</b>	<b>242</b>

**Key**

2017 more than 2016	
2017 less than 2016	

Source: DHSS

Source: [CDC](#)

**Table 2,  
Sexually Transmitted Diseases  
Jasper County January-October  
2017**

	2017
<b>Chlamydia</b>	576
<b>Gonorrhea</b>	160
<b>Syphilis</b>	4
<b>Total</b>	<b>740</b>

*Jasper County* has had a total of 740 sexually transmitted disease (STD) cases from January to October 2017. The majority of STD cases seen were positive for chlamydia, followed by gonorrhea and syphilis respectively. Data for STD count is tracked by the Missouri Department of Health and Senior Services and is subject to change as reports are collected.

Source: DHSS

**HELP INTERRUPT THE STEADY  
CLIMB OF STDs WITH THESE  
THREE STEPS:**

**TALK** 

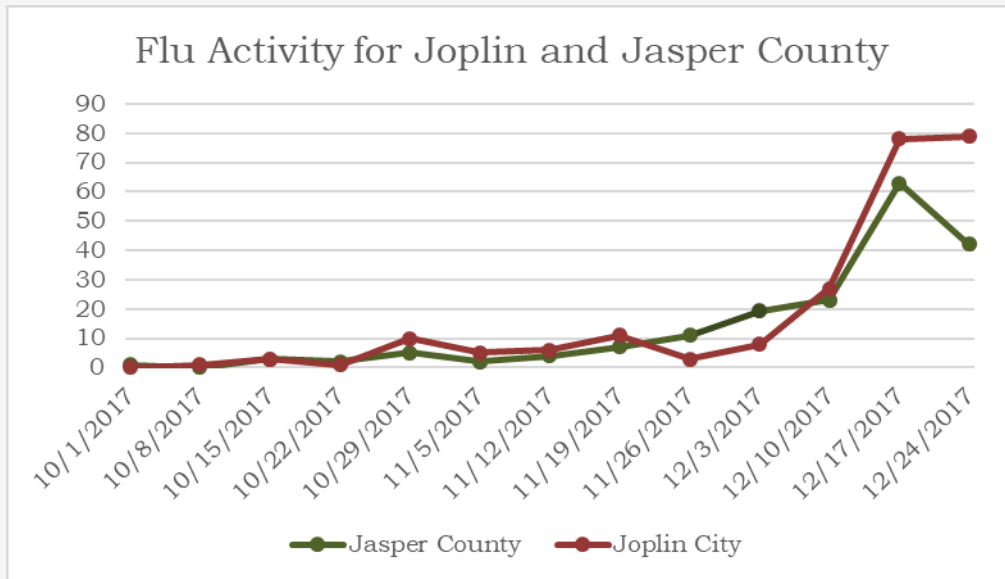
Talk openly about STDs with your partners & healthcare providers.

**TEST** 

Get tested. It's the only way to know if you have an STD.

**TREAT** 

If you have an STD, work with your provider to get the right medicine.



\*Source: Joplin City/Jasper County HD Flu Surveillance, 2017. Data is from week beginning October 1, 2017 to week beginning December 24, 2017. Data is preliminary and is subject to change.

Jasper County		
Type of Influenza	Season TD	% of Total
Influenza A	68	37.4
Influenza B	114	62.6
Unknown/Untyped	0	0
<b>Total</b>	<b>182</b>	<b>100</b>

Joplin City		
Type of Influenza	Season TD	% of Total
Influenza A	106	45.7
Influenza B	126	54.3
Unknown/Untyped	0	0
<b>Total</b>	<b>232</b>	<b>100</b>

Jasper County		
Age Group	Season TD	% of Total
0-1	9	4.9
2-4	19	10.4
5-14	60	33
15-24	6	3.3
25-49	34	18.7
50-64	33	18.1
65+	21	11.5
<b>Total</b>	<b>182</b>	<b>100</b>

Joplin City		
Age Group	Season TD	% of Total
0-1	17	7.3
2-4	26	11.2
5-14	57	24.6
15-24	19	8.2
25-49	44	19
50-64	16	7
65+	53	22.8
<b>Total</b>	<b>232</b>	<b>100</b>

### Contact Us:

Joplin City Health Department  
 321 E 4th Street  
 Joplin, MO 64801  
 Phone: 417-623-6122  
 Fax: 417-624-6453  
[www.joplinhealthdepartment.org](http://www.joplinhealthdepartment.org)  
 Like Us on Facebook:  
<https://www.facebook.com/joplinhealthdepartment/>

Jasper County Health Department  
 105 Lincoln Street  
 Carthage, MO 64836  
 Phone: 417-358-3111  
 Toll-Free: 1-877-879-9131  
<http://health.jaspercounty.org/>  
 Like Us on Facebook:  
<https://www.facebook.com/JasperCountyHealthDept>

If you have any comments, contact:  
 Jillian Pollard,  
 Community Health Planner/Educator  
 Regional Epidemiologist  
 Joplin City Health Department  
 Jasper County Health Department  
[jpollard@joplinmo.org](mailto:jpollard@joplinmo.org)  
 Office: 417-623-6122  
 Fax: 417-624-6453