

# Communicable Disease

## Quarterly Updates

Joplin City/Jasper County

Vol. 8, Issue 1 Jan–Mar 2015



**Public Health**  
Prevent. Promote. Protect.

## Flu Activity Update: Joplin/Jasper County

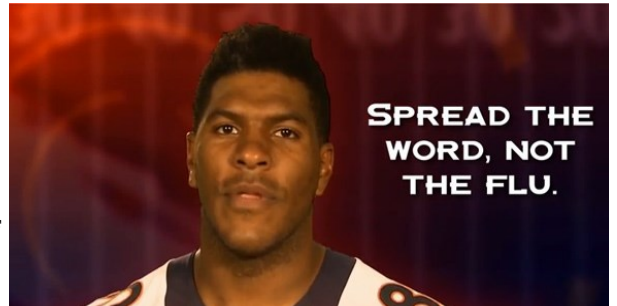
The 2014–2015 flu activity in Joplin/Jasper County has steadily declined since the end of February.

| Inside This Issue                              |   |
|------------------------------------------------|---|
| Influenza Summary Data                         | 2 |
| Sexually Transmitted Diseases in Jasper County | 2 |
| Reportable Diseases Report                     | 3 |
| Listeriosis Outbreak                           | 3 |
| Contact Information                            | 3 |

A total of 1,643 cases have been reported in Joplin City (828) and Jasper County (815) from September 28, 2014 through March 28, 2015. Analysis of cases reported was based on age, type of flu and jurisdiction.

Summary data on page 2.

For more flu activity information, visit: <http://www.cdc.gov/>



(Continued on page 2)

## Outbreak of Listeriosis Linked To Blue Bell Creameries Ice Cream

State and local health officials, CDC, and the U.S. Food and Drug Administration (FDA) are collaborating to investigate an outbreak of *Listeria monocytogenes* infections (listeriosis) linked to certain Blue Bell brand ice cream products.



Listeriosis is a life-threatening infection caused by eating food contaminated with the bacterium (germ) *Listeria monocytogenes*. Five people infected with one of four strains of *Listeria monocytogenes* were reported from Kansas. All five people were hospitalized at the same hospital for unrelated problems before developing invasive listeriosis—a finding that strongly suggests their infections were acquired in the hospital. Three deaths were reported among these five patients. Of the four ill people for whom information is available on the foods eaten in the month before *Listeria* infection, all four consumed milkshakes made with a single-serving Blue Bell brand ice cream product called “Scoops” while they were in the hospital.

(Continued on page 3)

# Communicable Disease Monthly Updates

## 2014-2015 Flu Activity Update cont'd

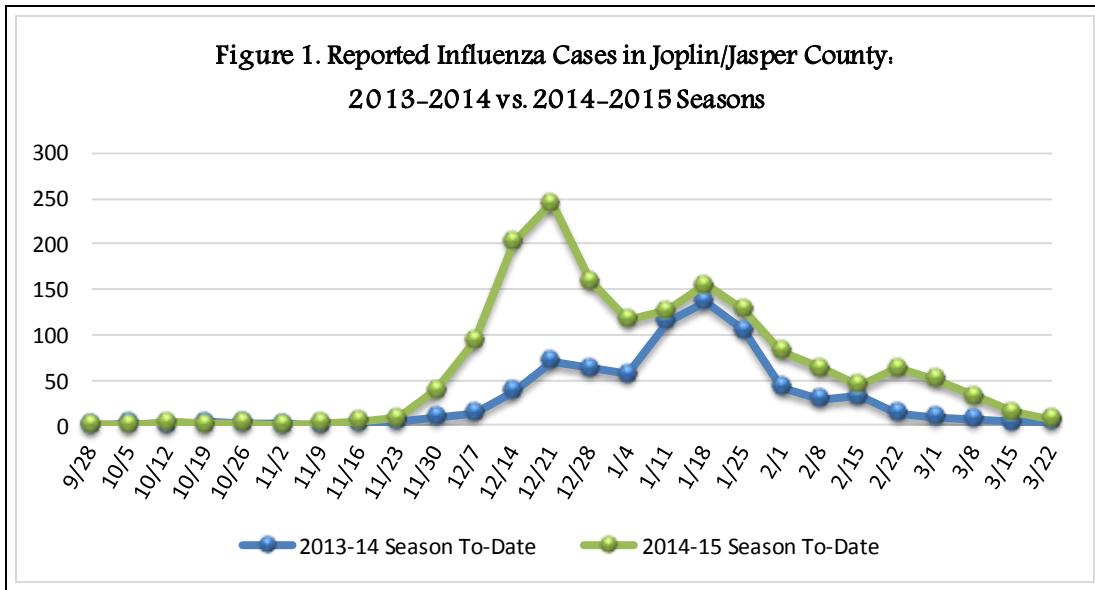
| Type of Influenza | Season-To-Date | Percent      |
|-------------------|----------------|--------------|
| Influenza A       | 671            | 82.3         |
| Influenza B       | 144            | 17.7         |
| Unknown           | 0              | 0.0          |
| <b>Total</b>      | <b>815</b>     | <b>100.0</b> |

| Type of Influenza | Season-To-Date | Percent      |
|-------------------|----------------|--------------|
| Influenza A       | 648            | 78.3         |
| Influenza B       | 179            | 21.6         |
| Unknown           | 1              | 0.1          |
| <b>Total</b>      | <b>828</b>     | <b>100.0</b> |

|              | Season-To-Date | Percent      |
|--------------|----------------|--------------|
| 0-1          | 81             | 9.9          |
| 2-4          | 95             | 11.7         |
| 5-14         | 266            | 32.6         |
| 15-24        | 119            | 14.6         |
| 25-49        | 126            | 15.5         |
| 50-64        | 55             | 6.7          |
| 65+          | 73             | 9.0          |
| <b>Total</b> | <b>815</b>     | <b>100.0</b> |

|              | Season-To-Date | Percent      |
|--------------|----------------|--------------|
| 0-1          | 51             | 6.2          |
| 2-4          | 85             | 10.3         |
| 5-14         | 234            | 28.3         |
| 15-24        | 95             | 11.5         |
| 25-49        | 158            | 19.1         |
| 50-64        | 86             | 10.4         |
| 65+          | 119            | 14.4         |
| <b>Total</b> | <b>828</b>     | <b>100.0</b> |

Source: Crystal Reports, Missouri Department of Health and Senior Services



## Sexually Transmitted Diseases (STD) in Jasper County, 2015

Based on table 5, there were 38 STD cases reported in January 2015 and 42 in January 2014. Chlamydia was the most reported STD while Syphilis was the least reported. There were more gonorrhea cases reported in January 2014 than was in 2015.

|              | 2015      | 2014      |
|--------------|-----------|-----------|
| Chlamydia    | 35        | 34        |
| Gonorrhea    | 2         | 7         |
| Syphilis     | 1         | 1         |
| <b>Total</b> | <b>38</b> | <b>42</b> |

# Communicable Diseases Monthly Newsletter: Joplin/Jasper County

**Table 6. Communicable Diseases Reported in Joplin /Jasper County.  
2014 and 2015 (January through March)**

|                                    | JOPLIN |      | JASPER |      |
|------------------------------------|--------|------|--------|------|
|                                    | 2014   | 2015 | 2014   | 2015 |
| CAMPYLOBACTERIOSIS                 | 3      | 5    | 6      | 5    |
| COCCIDIOIDOMYCOSIS                 | 0      | 1    | 0      | 0    |
| CRYPTOSPORIDIOSIS                  | 3      | 1    | 1      | 0    |
| E COLI SHIGA TOXIN POSITIVE        | 1      | 0    | 2      | 0    |
| E. COLI O157 H7                    | 0      | 0    | 1      | 0    |
| GIARDIASIS                         | 0      | 0    | 1      | 1    |
| HAEMOPHILUS INFLUENZAE             | 0      | 1    | 0      | 2    |
| HEPATITIS B (PREGNANCY)            | 0      | 0    | 1      | 0    |
| HEPATITIS B (ACUTE)                | 2      | 2    | 1      | 2    |
| HEPATITIS B (CHRONIC)              | 1      | 1    | 1      | 1    |
| HEPATITIS C (CHRONIC)              | 33     | 16   | 11     | 24   |
| LEGIONELLOSIS                      | 0      | 0    | 1      | 0    |
| MYCOBACTERIUM OTHER THAN TB (MOTT) | 5      | 3    | 7      | 2    |
| PERTUSSIS                          | 0      | 1    | 0      | 0    |
| RABIES POST EXPOSURE PROPHYLAXIS   | 1      | 0    | 1      | 0    |
| SALMONELLOSIS                      | 1      | 4    | 0      | 1    |
| STREP DISEASE (GROUP A INVASIVE)   | 1      | 0    | 1      | 1    |
| STREP PNEUMONIAE (<5 YRS INVASIVE) | 1      | 0    | 0      | 0    |
| TB DISEASE                         | 0      | 0    | 1      | 1    |
| TB INFECTION                       | 8      | 8    | 6      | 12   |
| VARICELLA (CHICKENPOX)             | 0      | 2    | 1      | 2    |

Source: DHSS.

Data is preliminary and may be subject to change

**Key**

|  |                       |
|--|-----------------------|
|  | 2015 lower than 2014  |
|  | 2015 higher than 2014 |

**Contact Us**

Joplin City Health Department  
321 E 4th Street

Joplin, MO. 64801

Phone: 417-623-6122

Fax: 417-624-6453

[www.joplinhealthdepartment.org](http://www.joplinhealthdepartment.org)

Like us on Facebook:

<https://www.facebook.com/JOPLINHd>

Jasper County Health Department

105 Lincoln Street

Carthage, MO. 64836

Phone: 417-358-3111

Toll Free: 1-877-879-9131

<http://health.jaspercounty.org>

Like us on Facebook:

<https://www.facebook.com/JasperCountyHealthDept>

If you have comments, contact:

Joseph T. Njenga, MPH, MHA

Regional Epidemiologist

Joplin City Health Department

Jasper County Health Department

[JNjenga@Joplinmo.org](mailto:JNjenga@Joplinmo.org)

Office: 417-623-6122

## Outbreak of Listeriosis ... continued from p.1

The Kansas Department of Agriculture's (KDA) laboratory isolated *Listeria monocytogenes* from a previously unopened, single-serving Blue Bell brand 3 oz. institutional/food service chocolate ice cream cup obtained in March 2015 from the hospital associated with this outbreak.

CDC recommends that consumers do not eat recalled products and that institutions and retailers do not sell or serve them. This investigation is ongoing, and new information will be provided as it becomes available.

Source: [CDC: Listeriosis Outbreak](#)