

# 2012



**Public Health**  
Prevent. Promote. Protect.

# Annual Report

## Joplin City Health Department

321 E. 4th St., Joplin, MO. 64801, - Tel. 417-623-6122 Fax. 417-624-6453 ; WIC Division—Tel. 417-623-1928 Fax. 417-625-4753  
[www.joplinhealthdepartment.org](http://www.joplinhealthdepartment.org)



### About Us

Joplin is located in southern Jasper County and northern Newton County. Joplin Health Department (JHD) primarily offers services to Joplin residents although certain services such as vital records and WIC are also provided to non-Joplin residents.

#### Revenue

In 2012, JHD received total revenue of about **\$2,877,834** from local and other sources. Local revenue accounted for 51% (\$1,464,039), while non-local sources accounted for 49% (\$1,413,794).

#### Expenses

JHD expenditure was **\$2,759,684** with 58% going toward salaries/fringes (\$1,592,995), followed by contracted services (\$941,758) accounting for about 34% of the total expenditure. (See revenue/expenditure charts on p.2)

*(Continued on page 2)*

### Inside

Services	Page
Revenue/Expenditure Charts	2
Environmental/Epidemiology	3
Women, Infants and Children (WIC)	3
Medical	3
Emergency Response	4
Animal Control	4
Vital Records	4

#### Days and Hours of operation

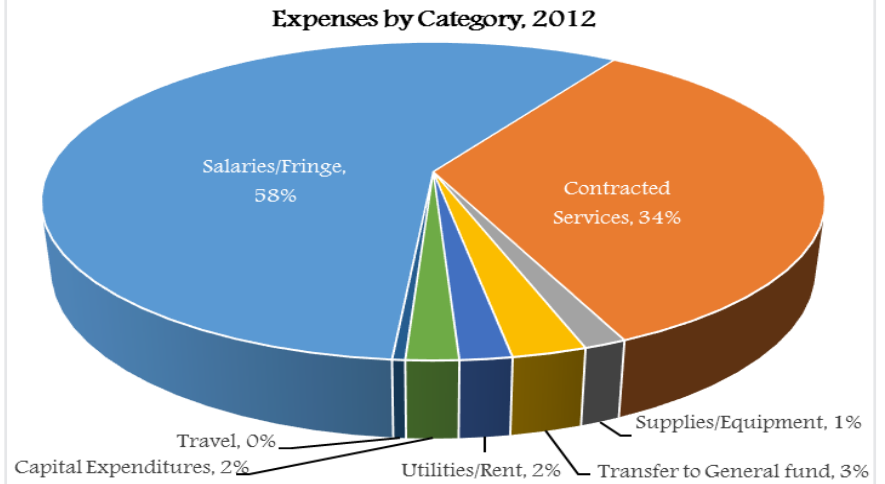
Monday –Friday  
8.00am–5.00pm

#### Our Mission

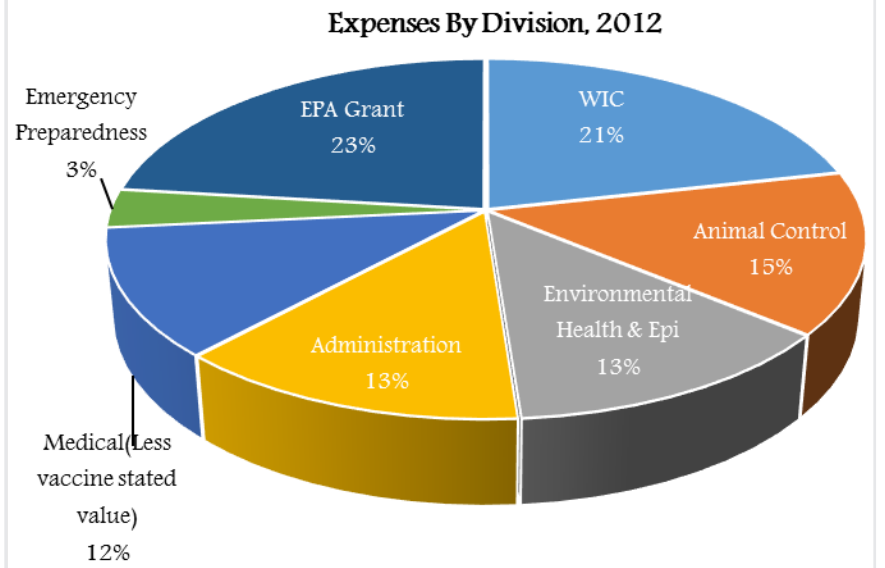
In order to protect the health of the community, the health department provides prevention, maintenance and educational services to the citizens and visitors of the area, other social, medical and educational providers, the business community, and the local, state and federal government agencies. Highly professional, responsive services are provided to all customers in a courteous manner with respect to individual dignity.

# Revenues and Expenses

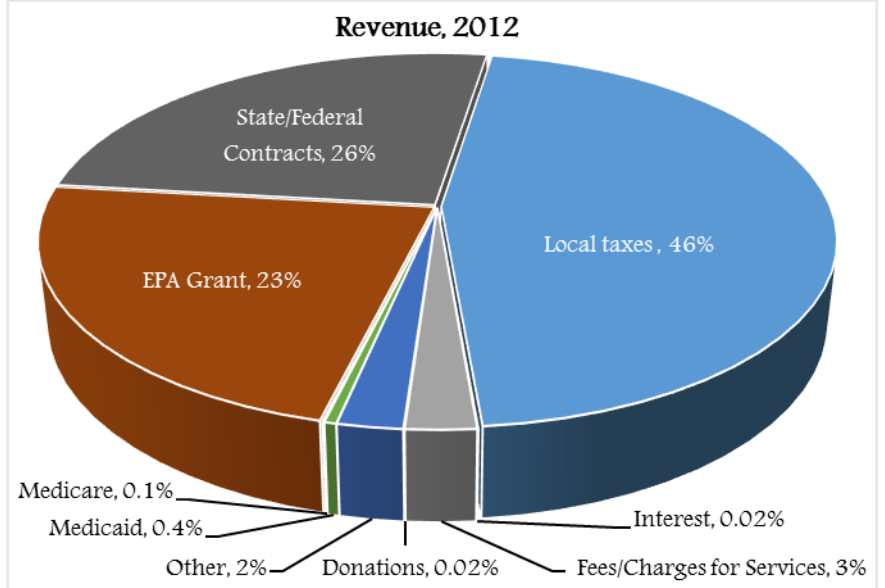
Expenses by Category, 2012	Amount(\$)
Salaries/Fringe	1,592,995.93
Contracted Services	941,758.34
Supplies/Equipment	40,851.05
Transfer to General fund	71,472.00
Utilities/Rent	49,984.83
Capital Expenditures	50,324.50
Travel	12,298.19
<b>Total</b>	<b>2,759,684.84</b>



Expenses By Division, 2012	Amount(\$)
WIC	592,846.43
Animal Control	402,582.42
Environmental Health/ Epidemiology	351,172.59
Administration	362,041.91
Medical (Less vaccine stated value)	318,548.81
Emergency Preparedness	94,374.72
EPA Grant	638,117.96
<b>Total</b>	<b>2,759,684.84</b>



Revenue, 2012		Amount (\$)
<b>Local Revenue</b>	Local taxes	1,327,933.60
	Interest	668.41
	Fees/Charges for Services	69,844.45
	Donations	581.00
	Other	65,012.11
<b>Other Revenue</b>	Medicaid	11,937.02
	Medicare	1,680.00
	EPA Grant	661,452.03
	State/Federal Contracts	738,725.25
<b>Total</b>		<b>2,877,833.87</b>



## Environmental and Epidemiology Services

**E**nvironmental and Epidemiology division has 4 Environmental Health Specialists, one Public Health Nurse and one Epidemiology Specialist.

**Services provided include.**

- ◆ Inspections on food establishments, lodgings, tattoo parlors, daycare facilities and swimming pools. Food safety trainings are also offered.
- ◆ Mosquito control activities (occasional fogging & treatment of standing water).
- ◆ Well-water testing
- ◆ Communicable diseases surveillance and investigations on reportable diseases.
- ◆ TB program which include: TB testing, case management, investigations, etc.
- ◆ Complaint investigations for regulated facilities.
- ◆ Architectural plan reviews for remodels or new facilities, in coordination with Joplin Building and Fire Departments.

**Permitted Facilities 2012**

- ◆ Food establishments - **413**
- ◆ Lodgings - **24**
- ◆ Tattoo parlors - **10**
- ◆ Daycare facilities - **31**
- ◆ Swimming pool - **49**

	2011	2012
Food Establishments Inspection	696	686
Lodgings Inspection	64	66
Day Care Inspection	36	
Pools Inspection	221	297
Food-Service Staff Trained	55	119
Communicable Disease Investigations	305	219
TB Case Management Patients	139	52
TB Skin Tests	314	179

## Women, Infant and Children (WIC)

**W**IC is the special supplemental nutrition program for women, infants and children. The program is grant funded by USDA via the Missouri Department of Health and Senior Services. The program is designed to promote and improve clients' health outcomes through nutritional education and counseling. Applicants must meet income guidelines of 185% or less of

federal poverty level, provide proof of residence and proof of identity. The program has **5** Nutritionists, **4** Certifiers, **3** Clerks, **6** Peer Counselors, **4** Spanish interpreters and **one** Nutrition Education Assistant from the University of Missouri Extension Family Nutrition Education Program. The WIC program provides breastfeeding support, nutrition education, referral to appropriate health agencies, nutritious food packages for eligible applicants.

WIC		
	2011	2012
<b>Total Clients</b>	<b>43,781</b>	<b>42,102</b>
Women	10,798	11,155
Infants	11,915	11,729
Children	21,087	19,218
Breastfeeding Mothers Peer Counseled	3,452	3,886
Breast Pumps Issued	136	229

## Medical Services

**M**edical Division has 3 nurses (2 RNs, one LPN) and 2 clerks.

Medical services include vaccinations (flu, yellow fever), childhood immunizations, maternal and child health programs (including pregnancy tests and referral, HIV tests, STD clinic, enrollment in temporary Medicaid card and MO HealthNet.

Other programs include childhood lead poisoning testing and prevention, through the Jasper County Health Department, low income pharmacy support by providing pharmaceuticals to Joplin residents who are clients of the Joplin Community Clinic.

JHD also houses AIDS Project of the Ozarks (APO) case managers who provide on-going case management of HIV positive residents.

Services Offered	2011	2012
Children Immunizations- Shots	4,341	2,119
Adult Immunizations—Shots	124	35
Yellow Fever Vaccinations	62	66
Influenza Vaccinations	368	406
HIV Tests	184	146
STD Clients	157	135
Pregnancy Tests	170	168
Temp Medicaid Cards Enrollment	129	128
Temp Medicaid Cards Renewal	30	32
Number of Prescriptions	7,403	7,035

## Emergency Preparedness and Response Planning

Joplin City Health Department is an active partner with other emergency response agencies in the community such as the Local Emergency Planning Committee (LEPC) and the Jasper/Joplin Emergency Healthcare Coalition (J/J-EHC).

Emergency Preparedness Planning services are grant funded by the Department of Health and Senior Services. Emergency Preparedness planning meetings are regularly held to discuss emergency preparedness issues, review plans, plan drills/exercises, provide surveillance and response capabilities for public health threats and updates regarding current activities.

## Animal Control Services

The JHD Animal Control Division has 3 Animal Control Officers (ACO) and provides comprehensive animal control services to Joplin residents.

**Services provided include.**

- ◆ Animal bite investigation and quarantine,
- ◆ Impoundment of stray and loose animals,
- ◆ Wild animal live trap loan

- services,
- ◆ Nuisance animal complaint investigation,
  - ◆ Enforcement of the city animal control code,
  - ◆ Educational programs regarding animal issues to the general public, schools, among others,
  - ◆ Animal abuse and neglect investigation.

Services	2012	2013
Citations	129	118
Written Warnings	192	159
Animals Quarantined	125	89
Animals Picked Up by ACO	2,414	2,330
Deceased Animals Pickup	413	381
Calls for Service	5,715	5,037
Action Performed	6,599	4,199

## Vital Records: Birth and Death Certificates

The JHD provides Missouri birth and death certificate printing for applicants born in Missouri. Each birth certificate costs \$15. A death certificate is \$13 per first copy and \$10 for an additional copy requested at the same time. Birth certificates are available from 1920 and death certificates from 1980.

Services	2012	2013
Number of Clients Seen	2,939	3,639
Birth Certificates Issued	3,126	3,838
Death Certificates Issued	405	491

For more information, contact us at 417-623-6122 or visit our website <http://www.joplinhealthdepartment.org> .  
We are located at 321 E. 4th St., Joplin, MO. 64801. Joplin City Health Department is an equal opportunity employer.