

Annual Report

2010

Joplin City Health Department

321 E. 4th St., Joplin, MO. 64801, - Tel: 417-623-6122 Fax: 417-624-6453 ; WIC Division—Tel: 417-623-1928 Fax: 417-625-4753
www.joplinhealthdepartment.org



Public Health
 Prevent. Promote. Protect.

SERVICES OFFERED

- ▶ Revenues and Expenses.....2
- ▶ Medical Services.....2
- ▶ Environmental & Epidemiology...3
- ▶ WIC Program3
- ▶ Emergency Response Planning....4
- ▶ Animal Control Services.....4
- ▶ Vital Records Expenses4

Monday through Friday
8:00am – 5:00pm

Our Mission

In order to protect the health of the community, the health department provides prevention, maintenance and educational services to the citizens and visitors of the area, other social, medical and educational providers, the business community, and the local, state and federal government agencies. Highly professional, responsive services are provided to all customers in a courteous manner with respect to individual dignity.

www.joplinhealthdepartment.org



About Joplin City Health Department

Joplin is located in southern Jasper County and northern Newton County. It is the largest city in Jasper County.

As a department of the city, the city health department primarily provides services to residents of Joplin. Certain programs including vital records and WIC are provided to non-Joplin residents.

Joplin City Health Department receives revenue from a variety of sources. Local revenue sources make up the largest segment of revenues at just under \$1.4 million or 64.6%. Of that amount, local taxes are the largest single item at approximately \$1.2 million .

Revenues from sources outside of the community account for approximately \$745,000 or 35.4% of total revenues. Contracts for various public health services from state/federal sources represent the single largest amount of outside funding at approximately \$716,000.

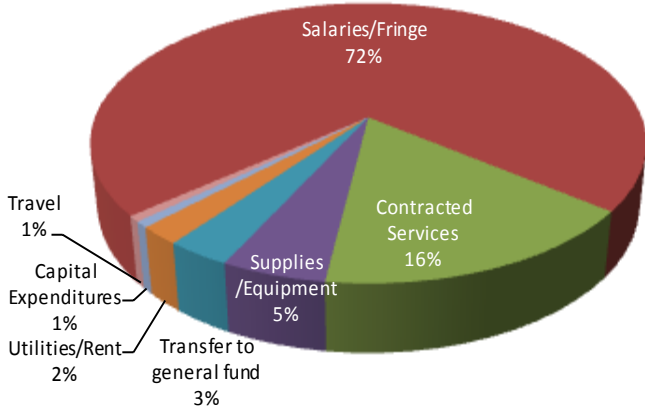
Health department expenses for 2010 totaled \$2,022,770. Of that amount, personnel costs were the largest segment of costs at approximately \$1.45 million or about 72%.

Department costs are also tracked by division with the WIC Division representing the largest segment of expenses.

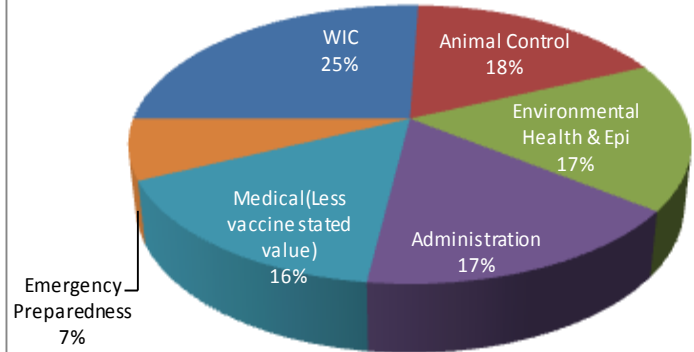
(Revenue/Expenses charts in page 2)

Revenues and Expenses

Expenses By Expense Category

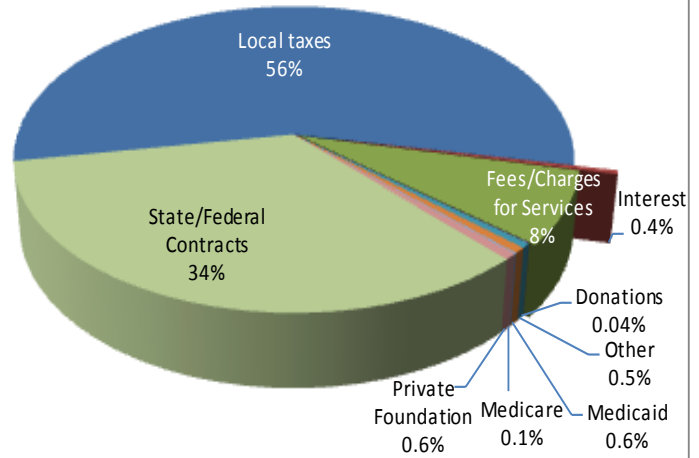


Expenses By Division



| Revenue | | Dollars (\$) | Percent (%) |
|---------------------------|-------------------------|------------------|-------------|
| Local Revenue (64.6%) | Local taxes | 1,178,012 | 56% |
| | Interest | 8,332 | 0.4% |
| | Fees/Charges | 161,549 | 8% |
| | Donations | 780 | 0.04% |
| | Other | 10,542 | 0.5% |
| Non-Local Revenue (35.4%) | Medicaid | 12,607 | 0.6% |
| | Medicare | 2,592 | 0.1% |
| | Private Foundation | 13,557 | 0.6% |
| | State/Federal Contracts | 716,047 | 34% |
| Total | | 2,104,018 | 100% |

Revenue 2010



Medical Services



The Medical Division has 3 nurses (2 RNs, one LPN) and 2 clerks.

The health department also houses AIDS Project of the Ozarks (APO) case managers in order to provide on-going case management of HIV positive residents.

Services provided include;

- ◆ Annual flu vaccinations
- ◆ International yellow fever vaccination
- ◆ Maternal and child health programs including pregnancy tests and referral, TEMP Medicaid card enrollment and MO Health Net enrollment
- ◆ Childhood lead poisoning testing and prevention program in conjunction with the Jasper County Health Department
- ◆ Low income pharmacy support program. Provide pharmaceuticals to Joplin residents who are clients of the Joplin Community Clinic
- ◆ Car seats are distributed to expectant mothers or parents of infants/children under 5 years that are enrolled in WIC program.

| Services Offered | 2009 | 2010 |
|---------------------------------|-------|-------|
| Children Immunizations -Clients | 1,547 | 1,615 |
| Children Immunizations- Shots | 3,684 | 3,660 |
| Adult Immunizations—Clients | 51 | 242 |
| Adult Immunizations—Shots | 55 | 258 |
| Yellow Fever Vaccinations | 77 | 71 |
| Influenza Vaccinations | 407 | 360 |
| HIV Tests | * | 254 |
| Pregnancy Tests | 239 | 162 |
| Temp Medicaid Cards Enrollment | 166 | 112 |
| Temp Medicaid Cards Renewal | 55 | 37 |
| Car Seats Distributed | 177 | 108 |
| Number of Prescriptions | 5,383 | 7,318 |

*_Data not available at the time of the report

Environmental and Epidemiology Services



Food Inspection at a Joplin Restaurant

Environmental and Epidemiology services are provided by 4 Environmental Health Specialists, one Public Health Nurse and one Epidemiology Specialist.

Services provided include:

- ◆ Inspections on food establishments, lodgings, tattoo parlors, daycare facilities and swimming pools. Food safety trainings are also offered.

- ◆ Mosquito control activities (occasional fogging and treatment of standing water).
- ◆ Well water testing
- ◆ Communicable diseases surveillance and investigations on over 100 reportable diseases in MO.
- ◆ TB program which involves routine testing, case management (treatment of cases for 6-9 months), case and outbreak investigations.
- ◆ Complaint investigations for the regulated facilities.
- ◆ Architectural plan reviews on remodels or new facilities in coordination with Joplin Building and Fire Departments.

Permitted Facilities 2010

There were 392 food establishments, 24 lodgings establishments, 9 tattoo parlors, 36 daycare facilities and 62 swimming pools in Joplin in 2010.

| | 2009 | 2010 |
|-------------------------------------|------|------|
| Food Establishments Inspection | 779 | 660 |
| Lodgings Inspection | 44 | 46 |
| Tattoo Parlors Inspection | 18 | 18 |
| Day Care Inspection | 45 | 40 |
| Pools Inspection | * | 301 |
| Food Safety Trainings | 7 | 6 |
| Food-Service Staff Trained | 140 | 130 |
| Communicable Disease Investigations | 363 | 219 |
| TB Case Management Patients | 35 | 30 |
| TB Skin Tests | 262 | 336 |
| Positive TB Skin Tests | 42 | 34 |
| TB Disease | 2 | 5 |
| Mosquito Control Actions | * | 512 |

* Data not available at the time of the report

Women, Infant and Children (WIC)



WIC is the special supplemental nutrition program for women, infants and children. The program is grant funded by USDA via the Missouri Department of Health and Senior Services. The program is designed to promote and improve clients' health outcomes through nutritional education and counseling.

Applicants must meet income guidelines of 185% or less of federal poverty level, provide proof of residence and proof of identity. Individuals who meet the income and category guidelines will be assessed for medical

or nutritional risk factors during the certification process.

The program has 5 nutritionists (4 of whom are Registered/Licensed Dietitians), 4 certifiers, 3 clerks, one Senior Peer Counselor who is also an International Board Certified Lactation Consultant (IBCLC), 5 Peer Counselors, 4 Spanish interpreters and one Nutrition Education Assistant from the University of Missouri Extension Family Nutrition Education Program.

The WIC program provides:

- ◆ Breastfeeding support
- ◆ Nutrition Education
- ◆ Referral to appropriate health agencies
- ◆ Nutritious food packages for eligible applicants

Significant Events

The Joplin WIC program has expanded its services in Carthage from 2 to 6 times per month, adding certification/recertification, and nutrition education

that had previously been provided. The Carthage clinic is located at Jasper County Health Department to meet the expanding needs in Eastern Jasper County.

Joplin WIC program has been utilizing the Missouri WIC Information Network System, a new computer system since May 2009 thus reducing paperwork, increased office space which is now used to provide services to participants, as well as reducing our carbon foot-print.

| WIC Fiscal Year (Oct 1- Sep 30) | | |
|--------------------------------------|---------------|---------------|
| | 2009 | 2010 |
| Total Clients | 48,637 | 49,266 |
| Women | 12,795 | 12,477 |
| Infants | 13,429 | 12,848 |
| Children | 22,413 | 23,941 |
| Breastfeeding Mothers Peer Counseled | 2,270 | 2,662 |
| Breast Pumps Issued | 97 | 106 |
| Ave. Monthly Case-load | 4,053 | 4,106 |

Emergency Preparedness and Response Planning



Joplin City Health Department is an active partner with other emergency response agencies in the community such as the Local Emergency Planning Committee (LEPC) and the Jasper/Joplin Emergency Healthcare Coalition (J/J-EHC). Emergency Preparedness Planning services are grant funded by the Department of Health and Senior Services.

Emergency Preparedness planning meetings are held on a monthly basis to discuss emergency preparedness issues, review plans, plan exercises, provide surveillance/response capabilities for outbreaks of infectious disease or other public health threats and updates regarding current activities.

Animal Control Services



The Joplin City Animal Control Division has 3 Animal Control Officers and provides comprehensive animal control services to Joplin residents.

Services provided include:

- ◆ Animal bite investigation and quarantine
- ◆ Impoundment of stray and loose animals
- ◆ Wild animal live trap loan services
- ◆ Nuisance animal complaint investigation
- ◆ Enforcement of the city animal control code
- ◆ Animal issue education programs for general public, schools, etc.
- ◆ Animal abuse and neglect investigation

| Services Offered | 2009 | 2010 |
|--|--------|-------|
| Citations | 205 | 188 |
| Animal Bites Reported | 182 | 178 |
| Written Warnings | 207 | 207 |
| Animals Quarantined (Rabies Observation) | 171 | 146 |
| Animals Picked Up (Domestic & Wild) | 2,846 | 2,620 |
| Deceased Animals Pickup | 648 | 497 |
| Calls for Service | 5,475 | 5,272 |
| Action Performed | 10,751 | 9,864 |

Vital Records (Birth and Death Certificates)

The City of Joplin Health Department provides vital records (birth and death certificates) printing for the state of Missouri. The cost of a copy is \$15 and applicants must have been born in Missouri.

Birth certificates are available from 1920, while death certificates are available from 1980.

| Services Offered | 2009 | 2010 |
|---------------------------|------|------|
| Number of Clients | 3317 | 3184 |
| Birth Certificates Issued | 3635 | 3519 |
| Death Certificates Issued | 127 | 146 |

For more information, contact us at 417-623-6122 or visit our website <http://www.joplinhealthdepartment.org>. We are located at 321 E. 4th St., Joplin, MO. 64801. Joplin City Health Department is an equal opportunity employer.

Compiled by: Joseph T. Njenga, MPH, MHA