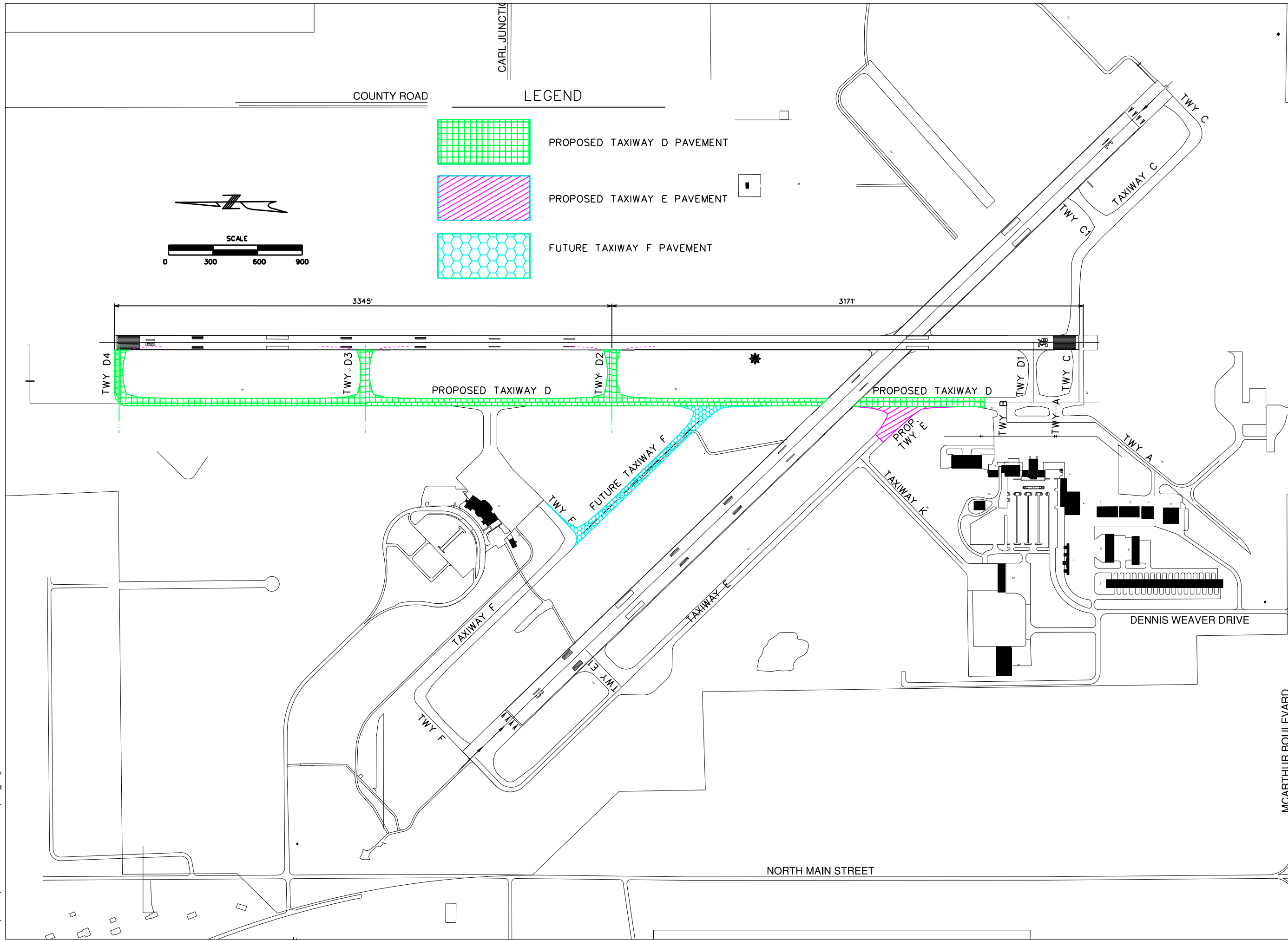


6/13/2018  
K:\Joplin\MOAp\18092-02\Draw\Exhibit\Option\_2.dgn



REVISIONS		
NUMBER	BY	DATE

0 1 2  
THIS BAR IS EQUAL TO 2"  
AT FULL SCALE (34X22).  
PLOT 1

**JOPLIN REGIONAL AIRPORT**  
7331 MISSOURI 43  
WEBB CITY, JASPER COUNTY, MO 64870

**RECONSTRUCT TAXIWAY D**

**CMT**

© Copyright CMT, Inc.  
One Memorial Drive, Suite 500, St. Louis, MO 63102  
P: (314) 436-5500; www.cmtengr.com  
PROFESSIONAL ENGINEERING - 000631

THE PROFESSIONAL WHOSE SIGNATURE AND PERSONAL SEAL APPEAR HEREON ASSUMES RESPONSIBILITY ONLY FOR WHAT APPEARS IN THESE REPORTS, SPECIFICATIONS, ESTIMATES, OR OTHER DOCUMENTS OR INSTRUMENTS AND IS NOT TO BE HELD RESPONSIBLE FOR THE DESIGN OR CONSTRUCTION OF ANY PART OR PARTS OF THE PROJECT TO WHICH THIS PAGE REFERS.

AIP PROJECT - 3-29-0037-040

FILE:	Option_2.dgn
DESIGN BY:	TWM
DRAWN BY:	TWM
CHECKED BY:	TCS
APPROVED BY:	TCS
DATE:	JUNE 15, 2018
JOB No:	18092-02
<b>FIGURE 4-2 PROPOSED ALIGNMENT OPTION #2</b>	
SHEET XX OF 112 SHEETS	